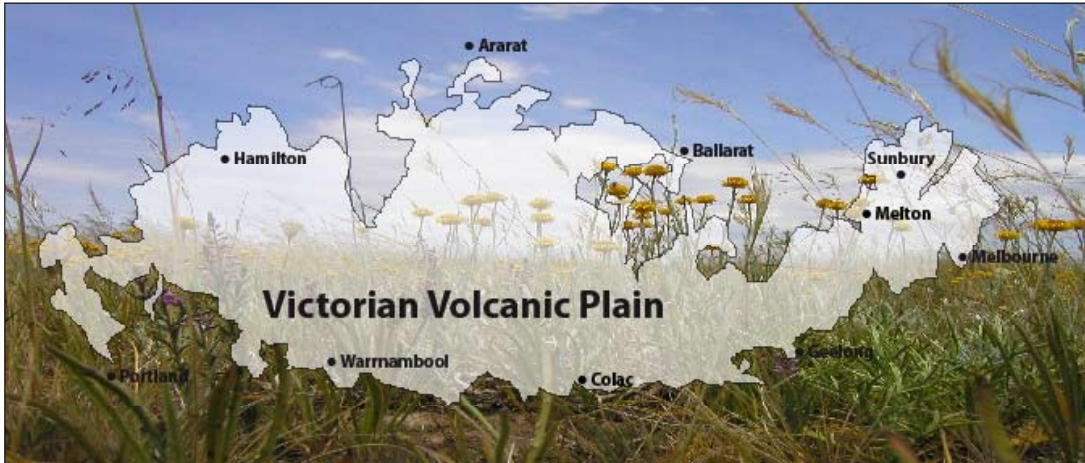


Temperate Grassland of the Victorian Volcanic Plain



Website
www.victorianaturally.org.au

ebulletin
Join our ebulletin by emailing your name to info@vnpa.org.au

Project leader
Carrie Deusch
0438 003 037
carried@vnpa.org.au

Biodiversity campaigner
Karen Alexander
0439 306 829
karena@vnpa.org.au

CRITICALLY ENDANGERED

The native grasslands of Victoria's Volcanic Plain are listed as critically endangered under the Federal Government's Environment Protection and Biodiversity Conservation Act.

The listing, reserved for species and ecosystems one step away from extinction, is a recognition of just how close Victoria's grasslands are to being lost forever.

Home to more than 25 nationally threatened species and already recognised as one of Australia's 15 National Biodiversity Hotspots, the ecology of the Victorian Volcanic Plain has suffered terribly since European settlement.

Ninety-two per cent of its original native vegetation has been cleared and the few remaining patches, often on rocky outcrops unsuitable for intensive agriculture, continue to be destroyed through a combination of raised bed cropping and modern rock-crushing machinery.

In Melbourne's outer western suburbs, which still retain intact patches of grassland, urban development and weed invasion are ongoing threats.

ONGOING THREATS

Weed invasion: About a third of plant species surveyed in the Natural Temperate Grasslands of the Victorian Volcanic Plain are weeds, which compete for space and reduce the diversity of native herbs.

Further clearing: Most patches of remaining grassland are on private land and potentially open to the threat of clearing for agriculture or urban development.

The most serious current threats are due to:

- Development pressures from the expansion of greater Melbourne.
- Continued intensification of agriculture through practices such as rock crushing machinery and raised-bed cropping.
- A lack of knowledge or awareness about how to manage grassland remnants for biodiversity and conservation.

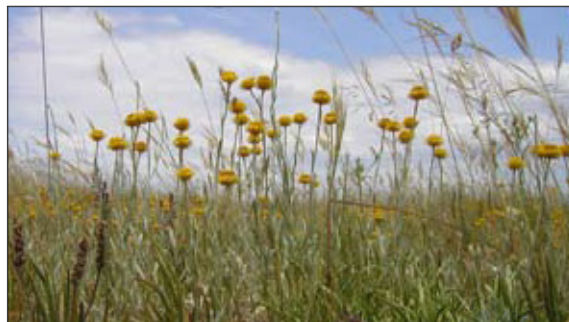


Photo: Sarah Bekessy



All Victorians enjoy the benefits that come from a healthy environment – good quality food and wine, clean water, holidays at the beach and in the bush. Biodiversity is the basis of this prosperity. But our unique plants and animals are under increasing pressure from land clearing, habitat destruction and climate change. We need firm and enduring action on these issues now if we want our kids to enjoy the benefits we do.
– Don Henry, Australian Conservation Foundation executive director

Threatened species listed under the Environment Protection and Biodiversity Conservation Act 1999 that occur in or near the Natural Temperate Grassland of the Victorian Volcanic Plain.

THREATENED ANIMALS OF THE VOLCANIC PLAIN

Species	EPBC Status
Southern Brown Bandicoot	Endangered
Eastern Barred Bandicoot.....	Endangered
Plains-wanderer	Vulnerable
Striped Legless Lizard	Vulnerable
Corangamite Water Skink.....	Endangered
Grassland Earless Dragon.....	Endangered
Southern Bell Frog	Vulnerable
Growling Grass Frog	Vulnerable
Warty Bell Frog	Vulnerable
Green and Golden Frog.....	Vulnerable
Golden Sun Moth	Critically Endangered



Growling Grass Frog
Photo: Michael Williams



Southern Brown Bandicoot

THREATENED PLANTS OF THE VOLCANIC PLAIN

Curly Sedge	Vulnerable
Small Scurf-pea	Endangered
Matted Flax-lily.....	Endangered
Small Golden Moths Orchid; Early Golden Moths.....	Endangered
Sunshine Diuris, White Diuris, Fragrant Double-tails	Endangered
Trailing Hop-bush.....	Vulnerable
Clover Glycine, Purple Clover	Vulnerable
Adamson's Blown-grass	Endangered
Spiny Pepper-cress.....	Vulnerable
Basalt Pepper-cress.....	Endangered
Hoary Sunray.....	Endangered
Plains Rice-flower, Spiny Rice-flower, Prickly Pimelea.....	Critically Endangered
Gorae Leek-orchid.....	Endangered
Maroon Leek-orchid, Slaty Leek-orchid, Stout Leek-orchid, French's Leek-orchid	Endangered
Fragrant Leek-orchid.....	Endangered
Basalt Greenhood.....	Endangered
Button Wrinklewort	Endangered
Large-fruit Groundsel, Large-fruit Fireweed.....	Vulnerable
Swamp Fireweed, Smooth-fruited Groundsel	Vulnerable
Austral Toadflax, Toadflax.....	Vulnerable
Swamp Everlasting	Vulnerable

Source: Information for this fact sheet has been taken from the Department of the Environment, Water, Heritage and the Arts website.
<http://www.environment.gov.au/biodiversity/threatened/communities/pubs/42-listing-advice.pdf>

